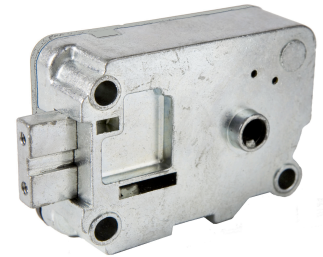


Changeable KeyLock

KL3909



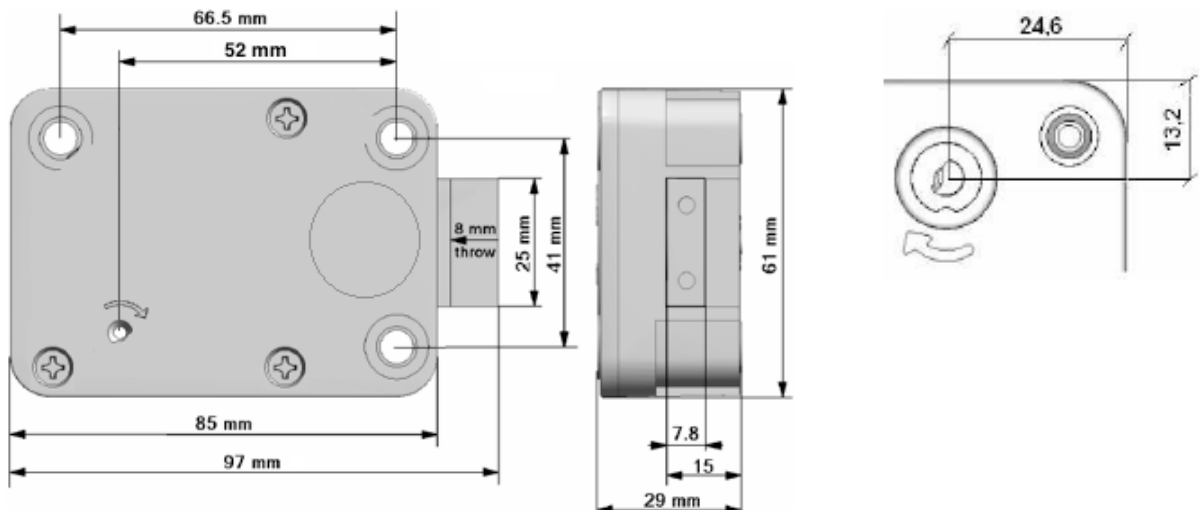
CHARACTERISTICS

The KL3909 is a key changeable key lock that can be fitted in any direction (HR, HL, VU or VD). Holes are supplied in bolt (end) to cater for boltwork extensions. The load on the bolt must not exceed 8N. Take care during installation so that no foreign objects such as paint flakes, weld spatter or metal shavings, end up in the lock case. Any modifications made to the lock during mounting will void manufacturers warranty. The lock must only be serviced by qualified engineers/technicians. The lock should never be lubricated. Any improper service or lubrication will void manufacturer warranty. Test lock functions before mounting. Please read through the full mounting instructions before mounting the lock. Locks not fitted in accordance with this instruction are not covered by manufacturers warranty.

KL3909 lock is certified: VdS class 2 and EN1300 class B – UL Group 2M

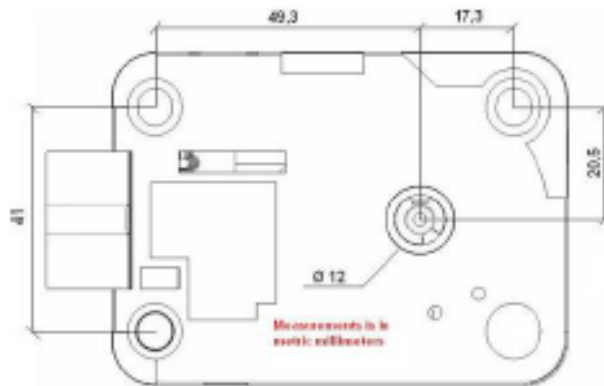
DIMENSIONS AND MOUNTING INSTRUCTION

Make sure mounting surface is clean and flat. Mounting pattern follows industry standard. Measure, mark and drill mounting holes and keyhole. Key hole $\varnothing 12\text{mm}$ and de-burr hole at both ends (if special key guide is used follow instructions for said article). Only use the delivered 3 (three) M6 mounting screws and fix the lock on the safe door. (Torque approximately 3,5 Nm). Tap mounting holes according to screws. Fasten lock with supplied screws. Always use Lock-Tite™ or equivalent on mounting screws and bolt attachment screws.



The mounting dimensions of the lock are standard (magic module).

User Instruction



Fit escutcheon on outside of safe (if used) making sure that change index is properly aligned according to lock handing.

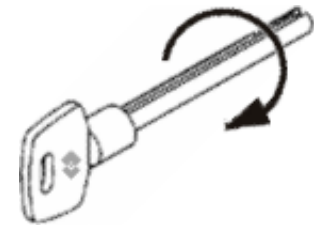
Check operation with key. There must be no dragging or binding against any part of the boltwork. If back panel is to be modified to accept change key, drill and de-burr hole. Place change sticker, correctly aligned, on back panel.

Check the function of the lock at least 3 times before the safe door is closed!!

USER INSTRUCTIONS

Open the Lock: (Use Opening Index)

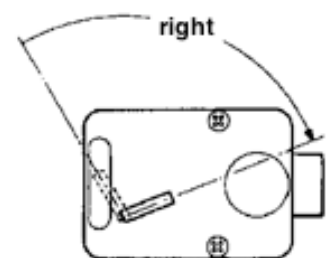
The lock is delivered in factory-mode, the opening of which involves the use of a "neutral key" (encoded 0-0-0-0). Insert the neutral key or, later, the stored key and open the lock by turning the key clockwise.



To set a new key after installation, you need the neutral key, key exchange and the new opening key.

Changing the opening key

- Insert the neutral key (coded 0-0-0-0) or, later, the opening stored key.
- Slowly turn the top lever clockwise until "click" and stop it in that position. Do not retract the bolt.
- Insert the change key into the hole on the back of the lock and turn it clockwise until it stops. Do not force the change key.
- Remove the old key opening after rotating anticlockwise.
- Insert the new key and turn it slowly clockwise until the "click" and stop it in that position. Do not force the key.
- Turn the change key clockwise and remove.



Perform various tests of opening before closing the safe.