



TechMaster

Default codes

Master	1 2 3 4 5 6 7 8	
Manager	1 2 3 4 5 6 +	Optional Dallas key
User 2	0 2 - 0 2 0 2 0 2 +	Optional Dallas key
User 3	0 3 - 0 3 0 3 0 3 +	Optional Dallas key
User x	x x - x x x x x x +	Optional Dallas key

- Dallas key** In the event that the user is composed of "code + Dallas key", before or after entering the code, the Dallas key must be placed on the appropriate Dallas key reader.
- Override user** Override users open without waiting the time delay. In the default programming They are set in dual code opening but, upon request, the single mode opening can also be set.
- Silent alarm** It is activated by increasing or decreasing the last digit by one number when entering the opening code.
- Penalty** After four attempts to enter an incorrect code, the lock starts a 4-minute delay period. Each attempt to enter the code within the 4 minutes delay period restarts the count.
- Low battery warning** A series of beeps while opening indicates a low battery level. Replace immediately the low battery with a new Alkaline one.
- Sound signals** A double beep  normally indicates a correct operation. A long beep  indicates an incorrect operation and the end of the operation itself.
- Recomm.** Do not use easily identifiable codes such as 123456, dates of birth or other personal information.

Opening *(It is recommended to change the factory code before use and to safely store the new code)*

Press any key to turn on the device. The display shows the message:

USER CODE X X - X X X X X X
MANAGER X X X X X X
TIME DELAY 00:59
OPEN WINDOW 00:01
OPEN

Press  to open with Manager code or go to the next step.

Enter the opening code. The display shows the time delay counting if programmed.

At the end of the time delay, the display shows the counting of the open window.

Enter the opening code. The display shows the message:

Open the safe door within 4 seconds.

Dual code opening *(It is recommended to change the factory code before use and to safely store the new code)*

Press any key to turn on the device. The display shows the message:

USER CODE X X - X X X X X X
MANAGER X X X X X X
TIME DELAY 00:59
OPEN WINDOW 00:01
2° USER CODE X X - X X X X X X
OPEN WINDOW

Press  to open with Manager code or go to the next step.

Enter the opening code. The display shows the time delay counting if programmed.

At the end of the time delay, the display shows the counting of the open window.


Enter the 1° opening code. The display shows the message:

Enter the 2° opening code. The display shows the message:


Open the safe door within 4 seconds.

Change code *(Safely store the new code and perform various opening / closing tests before closing the safe door)*

To be performed with the door open!

Press and hold . The display shows the message:

OLD CODE X X - X X X X X X
CHANGE MANAGER CODE
NEW CODE X X X X X X
CONFIRM CODE X X X X X X
OPERATION DONE

To change the Manager code press  twice. The display shows the message:

Enter the **old code**. The display shows the message:

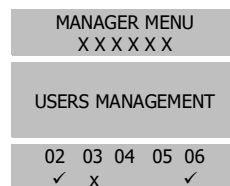
Enter the **new code**. The display shows the message:

Confirm the **new code**.

Perform various opening / closing tests before closing the safe door.

Users management

Press and then . The display shows the message:



Enter the Manager code and scroll through the submenus with until Users management. Press to access.

Press to scroll the list or enter the user ID.

"✓" installed user, "X" disabled user, "-" deleted user.

Overrides users can be installed only when the lock is open.

Press . If the user is not installed, the display shows the message:

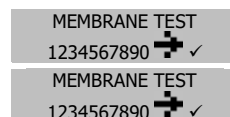


Press to confirm, or to disable/enable/delete and to confirm.

Membrane test

Press any key to turn ON the device.

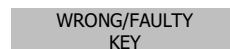
Press and hold the button . The display shows the message:



Press in sequence the buttons shown in the display.

A confirmation beep is given for each pushed key working properly.

A damaged key is indicated with a long beep. The display shows the message:



Change date and time

Press (or press and hold) . The display shows the message:



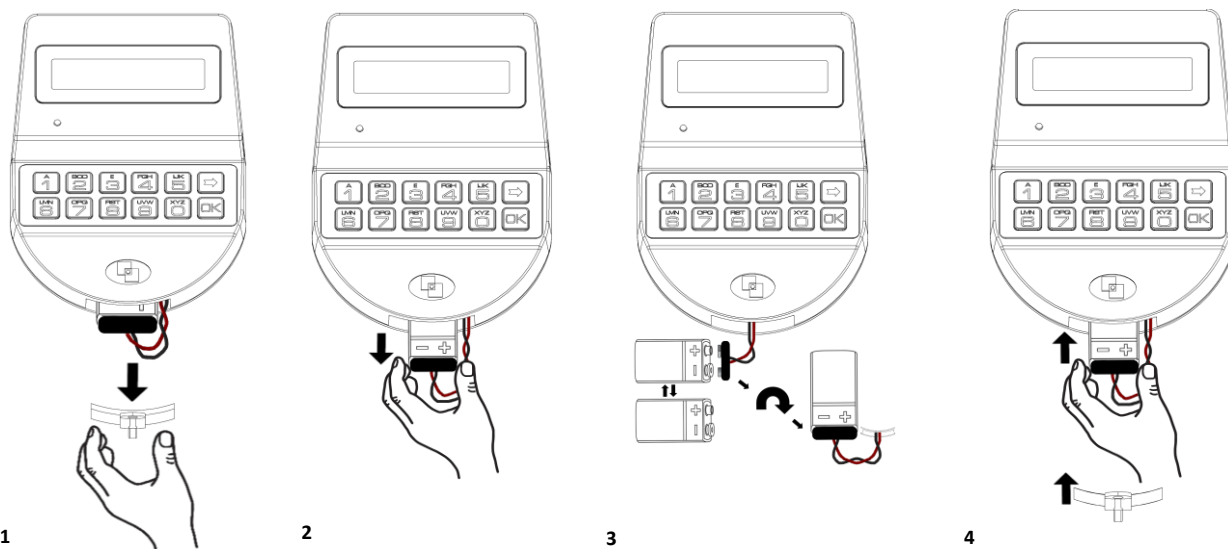
Enter the Master code. The display shows the message:

Press . The display shows the date and time currently set:

To modify, press . The display shows the message:

Enter time and date and press to confirm.

Battery replacement procedure *(To be performed with door open)*



Further information

For the complete manual and further information on the product's features, please visit www.tecnosicurezza.it

